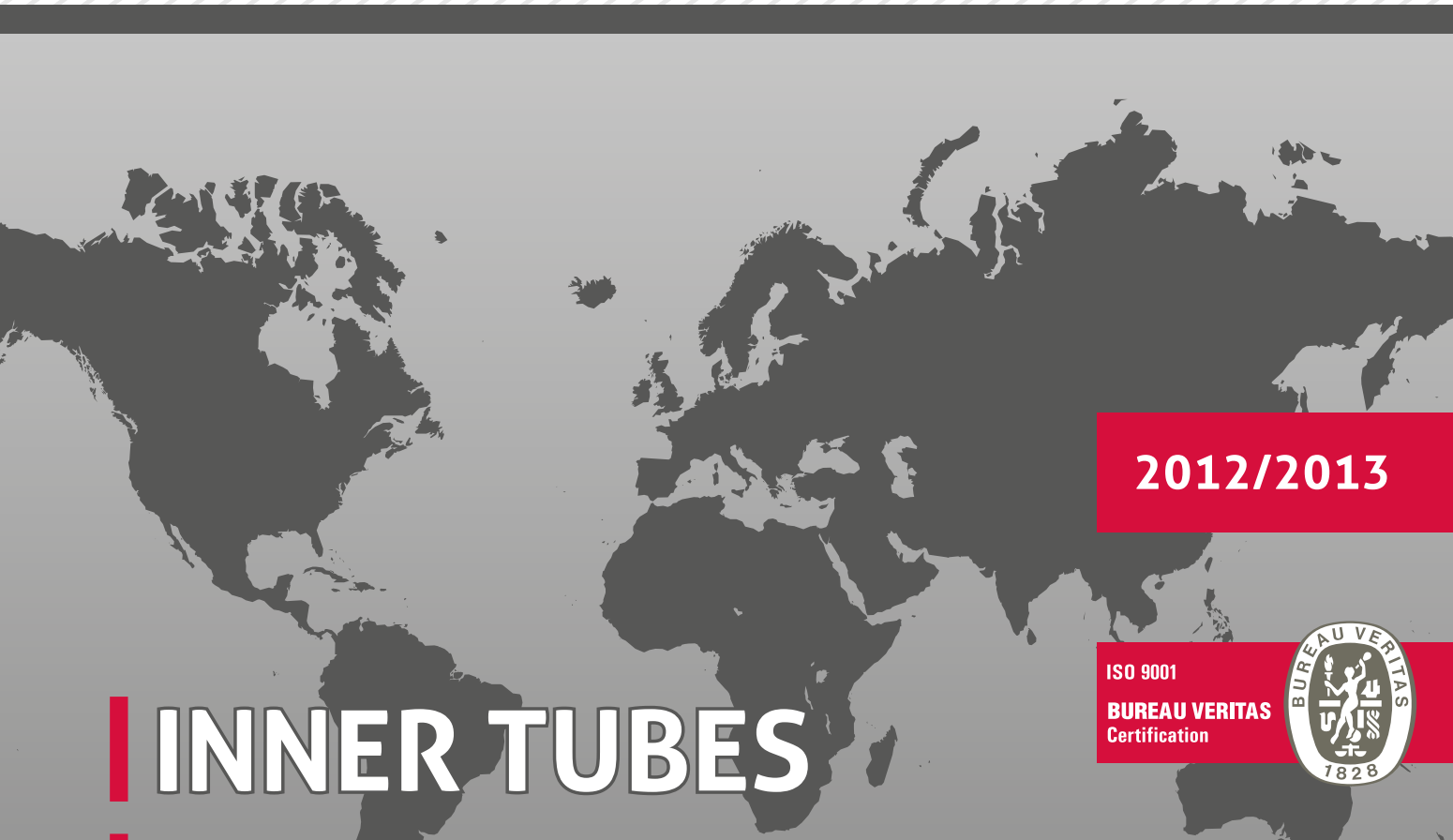




since 1983



2012/2013

INNER TUBES

RUBBER
COMPOUNDS

RUGS
AND MATS

ISO 9001
BUREAU VERITAS
Certification



ISO 14001
BUREAU VERITAS
Certification



PN-N 18001
BUREAU VERITAS
Certification



www.kabat.pl



ISO 9001
BUREAU VERITAS
Certification



ISO 14001
BUREAU VERITAS
Certification



PN-N 18001
BUREAU VERITAS
Certification



Kabat Company was established in 1983 by two brothers – Andrzej and Tadeusz Kabat. Since then they have been co-owners of the company and today the company is still a family business.

At the beginning Kabat company was a craftsmen shop, providing services for tyre and inner tube repairing and tyre retreading – all this was done in a space of merely 21 m². Today the whole facility area takes 18.500 m² and the company employs over 500 people.

Our core business are tyre inner tubes; besides them we also produce flaps, rubber compounds, rubber profiles (e.g. for fenestration joinery PVC and ALU), rubber mats and car rugs. Our offer grows continuously and we strive to provide our clients with a wide range of products. In October 2011 we have produced the first Kabat tyre. It's the first result of our investment, which will be finalized by the erection of a new hall for the production of agricultural and implement tyres. In 2011 the production of Kabat company reached the level of 15.000 tons of rubber products.

Our strengths are flexibility, high quality products and service. Our technical background consists of two mixer lines with mills, calendars, extruders and hydraulic presses. We offer production on hydraulic presses 650x650 mm with 100 t closing force and 1300x2500 mm or 800x4000 mm with 1000 t closing force. We also own extruders with diameters from 60 up to 250 mm. Since 2008 we have doubled our production power thanks to the equipment bought from Goodyear-Dębica. We also own a design studio and a complete R&D department, which allows us to quickly response to clients' and market requirements and to implement new products (mainly new inner tube sizes).

We are a leading inner tube producer in Europe and we are also in the forefront of the world's largest inner tube manufacturers. Our products find their way to customers in nearly 50 countries in EMEA, Asia and America.

Since 2006 we have been working in conformity to quality management systems **ISO 9001:2008** (production), **ISO 14001:2004** (environmental protection) and **PN-N 18001:2004** (health and safety at work), certified by Bureau Veritas. In 2003 our company has been certified with **NCAGE** (NATO Commercial and Government Entity Code), which helps us to take part in tenders for armies of many countries.

INNER TUBES



TUBES FOR TRUCKS AND BUSES

		CODE	SIZE	VALVE	Q-TY PER BOX
15"	1	DET077	7.00-15	V3.04.10	20
	2	DET095	7.00-15	TR-75A	20
	3	DET081	7.50-15	V3.02.18	20
	4	DET074	7.50/8.15-15	TR-75A	20
	5	DET073	8.15-15	TR-177A	20
	6	DEC004	8.25-15	V3.02.8	15
	7	DEC133	8.25-15	V3.04.5	15
	8	DEC030	8.25-15	TR-75A	15
	9	DEC001	8.40-15	TR-15	15
	10	DEC314	10.00-15	V3.02.8	15
	11	DEC051	12.5/60-15	V3.02.5	12
16"	12	DEC003	7.50-16	V3.02.18	18
	13	DEC102	7.50-16	V3.02.8	18
	14	DER264	7.50-16	TR-75A	18
	15	DEC229	8.25-16	V3.04.5	12
	16	DEC006	9.00-16	V3.02.8	12
	17	DER164	9.00-16	TR-177A	12
	18	DER356	9.00-16	TR-75A	12
	19	DEC155	10.5-16	V3.02.8	12
	20	DEC085	11.00/12.00-16	V3.04.10	10
	21	DEC086	13.00-16	V3.04.10	8
16.5"	22	DEC154	10.5-16.5	V3.06.8	12
17.5"	23	DEC336	8.5R17.5	V53.21.1	15
	24	DEC173	215/75-17.5	V3.02.18	15
18"	25	DEC014	12.00-18	V3.02.8	7
	26	DEC393	12.00-18	PK-5A	7
	27	DEC015	13.00-18	V3.02.8	6
	28	DEC244	13.00-18 military	PK-5A	5
	29	DEC149	6.50/7.00-20	V3.04.5	15
20"	30	DEC002	6.50/7.00-20	V3.02.18	15
	31	DET121	6.50/7.00-20	TR-75A	15
	32	DEC191	7.50-20	V3.02.8	15
	33	DEC193	7.50-20	V3.04.5	15
	34	DET122	7.50-20	TR-75A	15
	35	DEC018	7.50-20	V3.06.3	15
	36	DEC005	8.25-20	V3.02.10	12
	37	DEC007	9.00-20	V3.02.11	10
	38	DEC055	9.00-20	V3.06.8	10
	39	DEC082	9.00-20	V3.04.5	10
	40	DEC008	10.00-20	V3.02.14	10
	41	DEC045	10.00-20	V3.06.8	10
	42	DEC083	10.00-20	V3.04.5	10
	43	DEC182	10.00-20	V3.02.5	10
	44	DEC206	10.00-20	TR-87	10
	45	DEC009	11.00-20	V3.02.14	8
	46	DEC084	11.00-20	V3.04.5	8
	47	DEC048	11.00-20	V3.06.18	8
	48	DEC050	12.00-20	V3.02.14	6
	49	DEC052	12.00-20	V3.06.8	6
50	DEC174	12.00-20	V3.06.17	6	
51	DEC270	12.00-20	TR-78A	6	
52	DEC390	1200/500-508	NEW PK-5A	6	

		CODE	SIZE	VALVE	Q-TY PER BOX	
20"	53	DEC017	14.00-20	V3.06.8	6	
	54	DEC057	14.00-20	V3.02.14	6	
	55	DEC101	14.00-20	V3.04.5	6	
	56	DEC249	14.00-20	TR-179A	6	
	57	DEC271	14.00-20	TR-78A	6	
	58	DEC250	14.5R20	V3.02.16	6	
	59	DEC031	16.00-20	V3.06.8	5	
	60	DEC295	18.0/70-20	V3.04.5	5	
	61	DER354	20.0/70-20	V3.06.8	5	
	21"	62	DEC260	15.00-21 military	V590	2
		63	DEC232	15.00-21 military	TRJ-1175C	2
64		DEC387	1200/400-533	PK-5A	3	
65		DEC389	1300/500-533 NEW	PK-5A	2	
22"	66	DEC188	11.00-22 NEW	V3.06.5	7	
22.5"	67	DEC033	9.00-R22.5	V3.06.3	12	
	68	DEC034	10.00-R22.5	V3.06.2	10	
	69	DEC035	11.00-R22.5	V3.06.3	8	
	70	DEC036	12.00-R22.5	V3.06.2	8	
22.5"	71	DEC037	13.00-R22.5	V3.06.2	6	
	72	DEC038	15.00-R22.5	V3.06.2	5	
	73	DER392	315/80R22.5 NEW	VS3.21.1	6	
	74	DER395	385/65R22.5 NEW	VS3.21.1	5	
24"	75	DEC124	12.00-24	V3.06.8	6	
	76	DEC097	12.00-24	V3.02.15	6	
	77	DEC021	13.00-24	V3.02.14	6	
	78	DEC075	13.00-24	TR-177A	6	
	79	DEC013	14.00-24	V3.04.5	6	
	80	DEC099	14.00-24	V3.04.22	6	
	81	DEC109	14.00-24	V3.02.14	6	
	82	DER137	16.00-24	V3.04.22	4	
	83	DEC177	16.00-24 heavy duty	V3.02.17	3	
	25"	84	DEC169	18.00-25	V3.02.17	3

TUBES FOR CARS

		CODE	SIZE	VALVE	Q-TY PER BOX
10"	1	DET044	145-10	TR-13	50
	2	DEO001	125/135-12	TR-13	50
12"	3	DEO066	125/135-12	TR-15	50
	4	DEO002	145/155-12	TR-13	40
	5	DEO070	155/165/175/70-12	TR-13	40
13"	6	DEO003	135/70-13; 145/70-13	TR-13	40
	7	DEO004	145/70;155/70-13	TR-13	35
	8	DEO012	165/70-13	TR-13	35
	9	DEO005	175/70-13	TR-13	30
	10	DEO024	6.00/6.50-13	TR-13	30
	11	DEO076	GR13 185/195/205-13	TR-13	20
	12	DEO073	KR13 215/225/235-13	TR-13	20
	13	DEO072	7.50-13	TR-13	20
	14"	14	DEO032	4.00/4.50-14	TR-15
15		DEO006	165/175/70-14	TR-13	35
16		DEO007	175/185-14	TR-13	25
17		DEO055	195/205-14	TR-13	20
15"	18	DEO071	125-15	TR-13	40
	19	DER312	4.00/4.50-15	TR-15	40
	20	DEO074	135/140/145/150R15 155/70-15	TR-13	35
	21	DEO029	5.00-15	TR-13	35
	22	DEO023	165/175/70-15	TR-13	25
	23	DEO010	175/185/70-15	TR-13	25

		CODE	SIZE	VALVE	Q-TY PER BOX
15"	24	DEO009	175/185/70-15	TR-15	25
	25	DEO028	195/205-15	TR-13	20
	26	DEO069	MR15 215/225/235/70-15	TR-13	20
16"	27	DEO038	5.00/5.50-16	TR-15	25
	28	DEO044	5.00/5.50-16	TR-13	25

4 x 4 TUBES

		CODE	SIZE	VALVE	Q-TY PER BOX
15"	1	DTE001	235/75 R 15	TR-13	20
	2	DTE002	225/70 R 15	TR-13	20
	3	DTE003	255/70 R 15	TR-13	15
	4	DTE004	265/70 R 15	TR-13	15
	5	DTE005	30x9.50 R 15	TR-13	15
	6	DTE006	31x10.50 R 15	TR-13	15
	7	DTE015	32x11.50 R 15	TR-13	12
	8	DTE018	33x12.50 R 15	TR-13	10
	9	DTE019	35x12.50 R 15	TR-13	10
16"	10	DTE007	235/85 R 16	TR-13	18
	11	DTE008	225/75 R 16	TR-13	18
	12	DTE009	245/75 R 16	TR-13	15
	13	DTE010	265/75 R 16	TR-13	15
	14	DTE011	235/70 R 16	TR-13	18
	15	DTE012	245/70 R 16	TR-13	15
	16	DTE013	255/70 R 16	TR-13	15
	17	DTE014	265/70 R 16	TR-13	15
	18	DTE016	285/75 R 16	TR-13	12
	19	DTE017	295/75 R 16	TR-13	12
	20	DTE020	315/75 R 16	TR-13	10

TUBES FOR DELIVERY VANS

		CODE	SIZE	VALVE	Q-TY PER BOX
12"	1	DEC278	145/155-12	V3.02.5	40
13"	2	DEC279	165/70-13	V3.02.5	35
	3	DEC280	165/175/70-14	V3.02.7	35
14"	4	DEC282	5.90-14	V3.02.18	35
	5	DEC281	195/205-14	V3.02.7	20
15"	6	DEC230	6.00-15	V3.02.7	25
	7	DEO059	JR 78-15	TR-15	20
16"	8	DEC187	MR 15 215/225/235/70-15	V3.02.18	20
	9	DEO011	6.00/6.50-16	TR-15	20
	10	DEO036	6.00/6.50-16	TR-13	20
	11	DEO030	6.00/6.50-16	V3.02.18	20
	12	DEO033	6.00/6.50-16	TR-75A	20
	13	DEC079	7.50/8.25-16	V3.02.8	12
	14	DEO034	175/185-16	TR-13	25
	15	DEO016	195/205/215/70-16	TR-13	20
	16	DEO065	195/205/215/70-16	TR-15	20
	17	DER167	7.00/7.50-16	TR-13	18
	18	DEO058	225/235/245/255/70-16	TR-13	18

TUBES FOR AGRICULTURAL EQUIPMENT

		CODE	SIZE	VALVE	Q-TY PER BOX
12"	1	DEO047	5.00-12	TR-218A	40
	2	DEO060	6.00-12	TR-15	40
	3	DER283	10.0/80-12	TR-13	15
	4	DET103	10.0/80-12	V3.02.7	15
	5	DER146	10.0/80-12	JS-2	15



		CODE	SIZE	VALVE	Q-TY PER BOX
12"	6	DER118	10.0/80-12	TR-15	15
	7	DER360	200/60-14.5	TR-13	25
14.5"	8	DER364	200/60-14.5	TR-15	25
	9	DER263	30x11.5/14.5	V3.02.8	12
	10	DER180	30x11.5/14.5	V3.02.2	12
15"	11	DER132	5.00-15	TR-15	35
	12	DER213	6.00-15	TR-218A	25
	13	DEO027	6.70/7.50-15	TR-15	20
	14	DEO041	7.5L-15	TR-15	20
	15	DER261	7.5L-15	TR-218A	20
	16	DER140	12.5/60-15	TR-15	12
15.3"	17	DER010	4.00/60-15.5	TR-15	10
	18	DER005	10.0/75-15.3	TR-15	15
	19	DER006	10.0/75-15.3	TR-218A	15
	20	DER007	11.5/80-15.3	TR-15	12
	21	DER211	11.5/80-15.3	TR-218A	12
	22	DER009	12.5/80-15.3	TR-15	10
15.5"	23	DER181	4.00/60-3.50/70-15.5	TR-15	10
	24	DER200	4.00/60-3.50/70-15.5	TR-218A	10
	25	DER182	5.00/55/60-15.5	TR-15	10
16"	26	DER046	4.00/4.50-16	TR-15	40
	27	DER001	6.00-16	TR-15	25
	28	DER325	6.00-16	TR-218A	25
	29	DER326	6.50-16	TR-218A	20
	30	DER002	7.50-16	TR-15	18
	31	DER199	7.50-16	TR-218A	18
	32	DER256	8.25-16	TR-218A	12
	33	DER003	9.00/10.00-16	TR-15	12
	34	DER272	9.00/10.00-16	TR-218A	12
	35	DER251	10.5-16	TR-218A	15
	36	DER045	10.5/65-16	TR-15	15
	37	DER144	11.00-16	TR-15	10
	38	DER145	11.00-16	TR-218A	10
	39	DER124	12.0/65/75-16	TR-15	10
	40	DER008	14.0/65-16	TR-15	10
	16.5"	41	DER253	10-16.5	TR-15
42		DER248	12-16.5	TR-15	12
17"	43	DER087	15.0/55-17	TR-15	7
	44	DER292	15.0/55-17	TR-218A	7
	45	DER089	19.0/45-17	TR-15	6
	46	DER202	19.0/45-17	TR-218A	6
17.5"	47	DER270	215/75-17.5	TR-15	15
18"	48	DER335	4.50/4.75/5.00-18	TR-13	40
	49	DER038	6.00-18	TR-15	15
	50	DER226	6.00-18	TR-87	15
	51	DER229	7.50-18	TR-15	15
	52	DER225	7.50-18	TR-218A	15
	53	DER275	7.50-18	V3.04.10	15
	54	DER128	10.0/80-18	TR-15	9
	55	DER136	10.0/80-18	TR-218A	9
	56	DER020	12.5/80-18	TR-15	9
	57	DER021	12.5/80-18	TR-218A	9
	58	DER103	13.0/65-18	TR-15	8
	59	DER081	13.0/75-18	TR-218A	8
	60	DER350	14.5/80-18	TR-218A	8
	61	DER149	15.0/70-18	TR-15	8
	62	DEC156	15.0/70-18	V3.04.23	6
	63	DEC178	16.5/70-18	TR-15	6
19"	64	DER311	4.00/4.50/4.75/5.00-19	TR-13	20

		CODE	SIZE	VALVE	Q-TY PER BOX	
19"	65	DER327	4.00/4.50/4.75/5.00-19	TR-15	20	
	66	DER304	6.00-19	TR-15	15	
19.5"	67	DER212	18-19.5	TR-15	6	
	68	DER280	18-19.5	TR-218A	6	
	69	DER298	18-19.5	TR-300	6	
20"	70	DER141	6.50-20	SP-5	15	
	71	DER019	7.00/7.50-20	SP-5	15	
	72	DER044	6.50-20	TR-15	15	
	73	DER044	6.50-20	TR-15	15	
	74	DER004	7.00/7.50-20	TR-15	15	
	75	DER308	8.00/9.5-20	TR-15	12	
	76	DER086	8.00/9.5-20	TR-218A	12	
	77	DER092	11.2-20	TR-218A	7	
	78	DER121	10.5/80-20	TR-15	12	
	79	DER110	10.5/80-20	TR-218A	12	
	80	DER344	10.5/80-20	V3.06.8	12	
	81	DER036	12.5/80-20	TR-15	7	
	82	DER053	12.5/80-20	TR-218A	7	
	83	DER247	14.5/80-20	TR-15	7	
	84	DER090	14.5/80-20	TR-218A	7	
	85	DER172	14.5/80-20	V3.02.18	6	
	86	DER133	14.5/80-20	SP-4000	6	
	87	DER066	16/70-20	V 3.06.8	6	
	88	DER230	16/70-20	V 3.04.5	6	
	89	DER071	16/70-20	TR-218A	6	
90	DER070	16/70-20	TR-15	6		
91	DER361	20.0/70-20	TR-15	5		
92	DER405	260/70-280/70-20	NEW TR-218A	12		
22"	93	DER363	8.3/9.5-22	TR-15	10	
	94	DER372	8.3/9.5-22.5	NEW TR-15	10	
22.5"	95	DER316	10.00-R22.5	TR-300	10	
	96	DER317	11.00-R22.5	TR-300	8	
	97	DER318	12.00-R22.5	TR-300	8	
	98	DER286	13-22.5	TR-300	6	
	99	DER314	15-22.5	TR-300	5	
	100	DER331	16.5/18-22.5	TR-300	5	
	101	DEC215	16.5/18-22.5	TR-218A	5	
	102	DER341	18-22.5	TR-15	5	
	103	DER050	8.3/9.5-24	TR-218A	10	
	104	DER011	11.2/12.4-24	TR-218A	7	
24"	105	DER373	13.00-24	TR-218A	7	
	106	DER375	13.00-24	TR - 220	7	
	107	DER022	14.00-24	TR-218A	6	
	108	DER300	14.00-24	TR - 220	6	
	109	DER374	13.6-24 (narrow)	TR-218A	7	
	110	DER012	13.6/14.9-24	TR-218A	6	
	111	DER027	14.9-24	TR-218A	6	
	112	DER277	15.5/80-24; 16.5/85-24	TR-218A	6	
	113	DER336	16.0/70-24	TR-218A	6	
	114	DER104	16.9-24	TR-218A	4	
	115	DER197	17.5-24	TR-218A	4	
	116	DER414	19.5L24	NEW TR-218A	4	
	117	DER198	420-460/70-24	TR-218A	4	
	26"	118	DER313	13.6/14.9-26	TR-218A	5
		119	DER100	16.9/18.4-26	TR-218A	3
		120	DER060	23.1-26	TR-218A	2
121		DER388	28.1-26	TR-218A	1	
26.5"	122	DER246	6.00/55-26.5	TR-218A	2	
	123	DER163	7.00/50-26.5	TR-218A	2	

		CODE	SIZE	VALVE	Q-TY PER BOX
26.5"	124	DER420	8.3/9.5-28 NEW 	TR-218A	8
	125	DER330	9.5-28	TR-218A	6
28"	126	DER013	11.2/12.4-28	TR-218A	6
	127	DER026	13.6-28	TR-218A	5
	128	DER014	13.6/14.9-28	TR-218A	5
	129	DER048	16.9-28	TR-218A	4
	130	DER390	18.4-28	TR-218A	4
	30"	131	DER217	4.00-30	TR-15
132		DER303	14.9/15.5-30	TR-218A	4
133		DER030	16.9-30	TR-218A	4
134		DER031	18.4-30	TR-218A	3
135		DER309	21LR30, 23.1R30	TR-218A	2
30.5"	136	DER323	600/55/60-30.5	TR-218A	2
32"	137	DER095	8.3/9.5-32	TR-218A	8
	138	DER015	11.2/12.4-32	TR-218A	5
	139	DER306	24.5-32	TR-218A	2
	140	DER391	30.5-32	TR-218A	1
34"	141	DER017	16.9/18.4-34	TR-218A	3
	142	DER387	20.8-34	TR-218A	3
36"	143	DER084	4.00-36	TR-15	15
	144	DER218	4.00-36	TR-218A	15
	145	DER094	8.3/9.5-36	TR-218A	7
	146	DER278	11.2/12.4-36	TR-218A	5
38"	147	DER265	8.3/9.5-38	TR-218A	6
	148	DER362	12.4-38	TR-218A	5
	149	DER093	13.6/14.9-38	TR-218A	4
	150	DER109	15.5-38	TR-218A	3
	151	DER279	16.9-38	TR-218A	3
	152	DER018	18.4-38	TR-218A	3
	153	DER047	20.8-38	TR-218A	2
	154	DER295	650/60-38	TR-218A	2
40"	155	DER321	710/70-38 650/85-38	TR-218A	2
	156	DER349	8.3/9.5-40	TR-218A	6
42"	157	DER098	8.3/9.5-42	TR-218A	6
	158	DER288	11.2/10-42	TR-218A	5
	159	DER129	20.8-42	TR-218A	1
	160	DER220	710/70-42	TR-218A	1
44"	161	DER289	9.5/9-44	TR-218A	6
	162	DER185	11.2-44	TR-218A	5
46"	163	DER190	12.4/46	TR-218A	4
	164	DER287	9.5/9-48	TR-218A	5
48"	165	DER186	11.2/10-48	TR-218A	3
	166	DER222	13.6/12-48	TR-218A	2

TUBES FOR HEAVY EQUIPMENT

		CODE	SIZE	VALVE	Q-TY PER BOX
24"	1	DEC058	14.00-24	TR-177A	6
	2	DER228	14.00-24	TRJ 1175C	6
	3	DER091	20-24	TRJ-1175C	3
25"	4	DER119	15.5-25	TRJ 1175C	5
	5	DER338	15.5-25	TRJ 4000	5
	6	DER130	16.00-24/25	TRJ 1175C	4
	7	DER107	17.00-25	TRJ 1175C	4
	8	DER108	17.50-25	TRJ 1175C	4
	9	DER345	17.50-25	TRJ 4000	4
	10	DER102	18.00-25	TRJ 1175C	4
	11	DER085	20.50-25	TRJ 1175C	3
	12	DER337	20.50-25	TRJ 4000	3

		CODE	SIZE	VALVE	Q-TY PER BOX
25"	13	DER061	23.5-25	TRJ 1175C	2
	14	DER351	23.5-25	TRJ 4000	2
	15	DER062	25.5-25	TRJ 1175C	2
	16	DER074	26.5-25	TRJ 1175C	2
	17	DER382	29.5-25	TRJ 1175C	1
33"	18	DER139	18.00-33	TRJ 1175C	3
	19	DER358	21.00-33	V3.02.17	3
	20	DER385	21.00-33	TRJ 1175C	1

TUBES FOR FORKLIFTS AND INDUSTRIAL CARS

		CODE	SIZE	VALVE	Q-TY PER BOX
2"	1	DET062	200-50	TR-87	100
	2	DET157	2.50/2.80-4	TR-87	100
4"	3	DET001	3.00-4	TR-87	100
	4	DET035	3.00-4	TR-13	100
	5	DET002	4.00-4	TR-87	100
	6	DET034	4.00-4	TR-13	100
	7	DET150	11x4.00-4	TR-13	100
	8	DET076	11x7.00-4	TR-87	50
	9	DET138	21x4	JS-2	35
5"	10	DET108	4.10/3.50-5	TR-87	75
	11	DET148	11x6.00-5	TR-87	50
	12	DET102	23-5	TR-13	25
	13	DET011	23-5	GW 4B 50*x65	25
6"	14	DET100	23-5	V3.02.19	25
	15	DET033	3.50/4.00-6	TR-13	75
	16	DET022	3.50/4.00-6	TR-87	75
	17	DET088	13x5.00-6	TR-13	75
	18	DET087	13x5.00-6	TR-87	75
	19	DET036	15x6.00-6	TR-13	50
	20	DET071	15x6.00-6	TR-87	50
	8"	21	DET064	3.00/3.25-8	TR-13
22		DET065	3.00/3.25-8	TR-87	75
23		DET160	3.50-8	TR-87	75
24		DET139	145/70-8	TR-87	75
25		DET003	4.00-8	TR-87	75
26		DET004	4.00-8	TR-13	75
27		DET115	4.00-8	JS-2	75
28		DET007	5.00-8	TR-87	50
29		DET016	5.00-8	TR-13	50
30		DET140	5.00-8	JS-2	50
31		DET019	16x6.5/7.5-8	TR-13	50
32		DET017	18x8.50/9.50-8	TR-13	30
33		DET023	18x8.50/9.50-8	TR-87	30
34		DET086	20x8.00/10.00-8	TR-13	30
35		DET040	18x7-8	V3.02.5	35
36		DET043	18x7-8	TR-13	35
37		DET118	18x7-8	JS-2	35
9"	38	DET028	5.00-9	TR-15	50
	39	DET008	6.00-9	TR-87	40
	40	DET072	6.00-9	TR-13	40
	41	DET037	6.00-9	TR-15	40
	42	DET109	6.00-9	JS-2	40
10"	43	DET014	3.00/3.50/4.00-10	TR-13	50
	44	DET005	4.00/4.40-10	TR-13	50
	45	DET006	4.00-10	TR-87	50
	46	DET018	5.00-10	TR-13	50
	47	DET127	5.00-10	TR-15	50



		CODE	SIZE	VALVE	Q-TY PER BOX	
10"	48	DET025	5.0/5.00-10	TR-218A	50	
	49	DET009	6.50-10	TR-87	30	
	50	DET143	6.50-10	TR-13	30	
	51	DET078	6.50-10	JS-2	30	
	52	DET144	18x8/8.50/10.50-10	TR-13	30	
	53	DET066	20x8.00/10.00-10	TR-13	30	
	54	DET112	21x7/8/9.00-10	GP-4	30	
	55	DET135	23x9-10	JS-2	30	
	56	DET050	23x9-10	V3.02.7	30	
	11"	57	DEO075	560x165-11	TR-87	40
12"	58	DET155	4.00-12	TR-15	60	
	59	DET015	5.00-12	TR-13	40	
	60	DEO026	6.00-12	TR-218A	40	
	61	DET068	6.5/80-12	TR-218A	40	
	62	DET010	7.00-12	V3.02.18	20	
	63	DET031	7.00-12	TR-75A	20	
	64	DET117	7.00-12	JS-2	20	
	65	DET039	7.00-12	TR-13	20	
	66	DET069	7.00-12	TR-218A	20	
	67	DET058	23x8.5/10.5-12	TR-13	20	
	68	DET119	23x8.5/10.5-12	TR-15	20	
	69	DET129	23x8.5/10.5-12	TR-218A	20	
	70	DET059	23x10-12	TR-13	20	
	71	DET110	26x12.00-12	TR-13	15	
	72	DET111	26x12.00-12	TR-15	15	
	73	DET137	26x12.00-12	TR-218A	15	
	74	DET107	27x10-12	V3.02.3	15	
	75	DET079	27x10-12	JS-2	15	
	15"	76	DEO022	2.15-15	V3.06.18	20
		77	DET013	2.50-15	V3.02.18	20
78		DET136	2.50-15	JS-2	20	
79		DET116	2.50/3.00-15	TR-75A	20	
80		DET046	3.00-15	V3.02.8	15	
81		DEC100	3.00-15	V3.04.10	15	
82		DER297	28x9-15	V3.02.18	20	
83		DER183	32x12.1-15	TR-177A	12	
84		DET152	7.00-15	JS-2	20	
85		DET029	7.50-15	V3.02.8	20	
86		DET012	8.15-15	V3.02.18	20	
87		DET141	7.50/8.15-15	JS-2	20	

		CODE	SIZE	VALVE	Q-TY PER BOX
22.5"	5	DER176	500/550/60-22.5	TR-218A	2
	6	DER175	600/50-22.5	TR-218A	2
	7	DER177	600/55-22.5	TR-218A	2
	8	DER178	650/60-22.5	TR-218A	2
	9	DER168	700/45-22.5	TR-218A	2

MOTORCYCLE TUBE S

		CODE	SIZE	VALVE	Q-TY PER BOX
10"	1	DEM026	3.00/3.50-10	V1.09.1	50
	2	DEM001	3.00/3.50-10	TR-87	50
12"	3	DEM030	3.00/3.50-12	TR-87	50
	4	DEM002	3.00-12	V1.09.1	50
16"	5	DEM003	2.50/2.75/3.00-16	V1.09.1	50
	6	DEM031	3.00-16 heavy duty	V1.09.1	25
	7	DEM004	3.50-16	V1.09.1	40
17"	8	DEM041	4.50-17	V1.09.1	50
	9	DEM042	4.50-17 heavy duty	V1.09.1	20
18"	10	DEM046	3.00-18	V1.09.1	40
	11	DEM045	3.00-18 heavy duty	V1.09.1	20
	12	DEM006	3.50-18	V1.09.1	40
	13	DEM035	3.50-18 heavy duty	V1.09.1	20
	14	DEM007	4.00-18	V1.09.1	40
	15	DEM040	4.00-18 heavy duty	V1.09.1	20
	16	DEM024	4.00/4.50-18	TR-13	40
	17	DEM008	4.75-18	V1.09.1	40
19"	18	DEM009	2.50/2.75-19	V1.09.1	40
	19	DEM009	3.00-19	V1.09.1	40
	20	DEM032	3.00-19 heavy duty	V1.09.1	20
	21	DEM037	3.25/3.50-19 heavy duty	V1.09.1	20
	22	DEM010	3.50-19	V1.09.1	40
21"	23	DEM012	2.75-21	V1.09.1	40
	24	DEM034	2.75-21 heavy duty	V1.09.1	20
	25	DEM011	3.00-21	V1.09.1	40
	26	DEM033	3.00-21 heavy duty	V1.09.1	20
	27	DEM044	3.00/3.25-21 heavy duty	V1.09.1	20
22"	28	DEM013	2.75-22	V1.09.1	40
	29	DEM038	2.75-22 heavy duty	V1.09.1	20
23"	30	DEM014	2.75-23	V1.09.1	40
	31	DEM039	2.75-23 heavy duty	V1.09.1	20

SCOOTER TUBES

		CODE	SIZE	VALVE	Q-TY PER BOX
	1	DMO001	2 1/4 -16/20x2.25	V1.06.1	75
	2	DMO002	2 1/4 -17/21x2.25	V1.06.1	75
	3	DMO003	2 3/4 -17/21x2.75	V1.06.1	75
	4	DMO004	2 1/4 -19/23x2.25	V1.06.1	50
	5	DMO005	2 1/2 -9	TR-87	75

OFF-ROAD

		CODE	SIZE	VALVE	Q-TY PER BOX
15"	1	DET047	27x8.50/10.50-15	TR-13	20
	2	DET084	27x8.50/10.50-15	TR-15	20
	3	DER315	29x12.00/12.50-15	TR-218A	15
	4	DER169	31x10.50/11.50-15	TR-13	15
	5	DER126	31x12.50/13.50-15	TR-13	12
	6	DER138	31x15.50-15	TR-13	12
	7	DER179	33x12.50/15.50-15	TR-13	12

TWIN

		CODE	SIZE	VALVE	Q-TY PER BOX
22.5"	1	DER158	400/55-22.5	TR-218A	5
	2	DER255	445/65-22.5	TR-218A	5
	3	DER159	500/45-22.5	TR-218A	2
	4	DER148	500/60-22.5	TR-218A	2

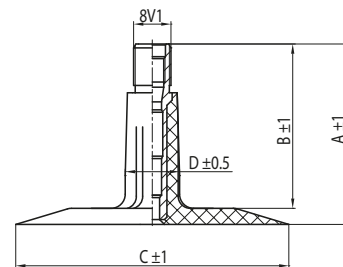


FLAPS

	CODE	SIZE	WIDTH (mm)	Q-TY PER BOX
1	OCH033	23-5	95±5 mm	30
2	OCH029	5.00-8 (A-8)	75±3 mm	80
3	OCH031	18x7-8	100±3 mm	70
4	OCH039	6.00-9 (B-9)	100±3 mm	40
5	OCH032	6.50-10 (C-10)	130±5 mm	40
6	OCH034	7.00-12 (C-12)	120±5 mm	35
7	OCH052	5.90/7.00-14	160±10 mm	10
8	OCH030	170-14,5	180±10 mm	10
9	OCH050	210-14,5	210±10 mm	10
10	OCH040	7.50/8.15-15 (C-15)	160±5 mm	20
11	OCH016	8.25-15 (E-15)	180±10 mm	10
12	OCH045	10.0/11.5-15.3 (D)	215±10 mm	10
13	OCH051	E-16 6.50/7.50/8.25-16	170±10 mm	10
14	OCH024	22-16	420±10 mm	2
15	OCH074	13.00-16 NEW 	330±10 mm	10
16	OCH054	12.00/13.00-18	260±10 mm	10
17	OCH008	6.50/7.50-20 (C-20)	135±10 mm	15
18	OCH009	8.25/900-20 (E-20)	180±10 mm	10
19	OCH053	10.00/11.00-20 F-20 wąski	200±10 mm	10
20	OCH010	10.00/11.00-20 (F-20) standard	220±10 mm	10
21	OCH020	12.00/13.00-20 (G-20)	250±10 mm	5
22	OCH025	14.00-20 (H-20)	300±10 mm	5
23	OCH028	16.00-20, 16/70-20 (I-20)	340±10 mm	4
24	OCH047	11.00/12.00-24	220±10 mm	8
25	OCH048	13.00/14.00-24	260±10 mm	5
26	OCH068	15.5/17.5/18-25	380±10 mm	3
27	OCH061	20.5-25	470±10 mm	2
28	OCH049	23.5-25	495±10 mm	2
29	OCH072	26.5-25 NEW 	600±10 mm	1
30	OCH069	29.5-25 NEW 	645±10 mm	1
31	AKC021	Klin gumowy Tyran 20"		50
32	PGK263/OR6/25	Oring 25"x6,6		200
33	PGK247/OR10/25	Oring 25"x10		100

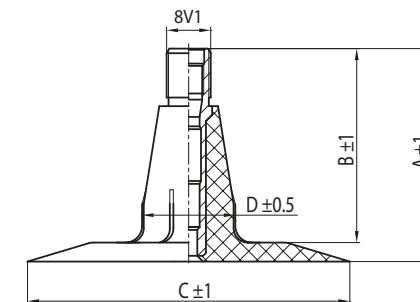
VALVES

TR-13



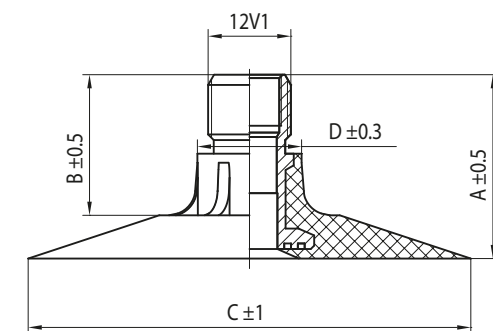
VALVE	A (mm)	B (mm)	C (dia mm)	D (dia mm)
TR-13	37	33.5	56	11.2

TR-15



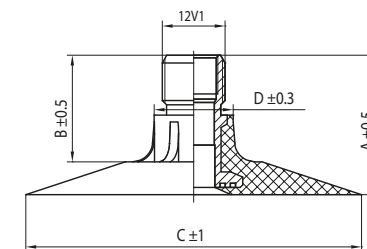
VALVE	A (mm)	B (mm)	C (dia mm)	D (dia mm)
TR-15	37	33.5	56	16.2

TR-218



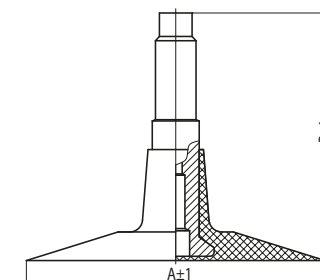
VALVE	A (mm)	B (mm)	C (dia mm)	D (dia mm)
TR-218A	27	20.65	64	15.9

TR-220



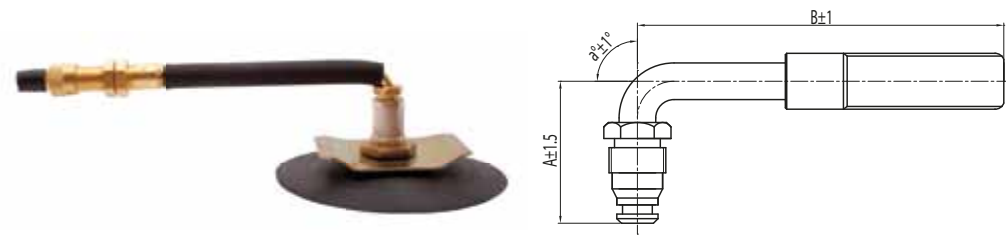
VALVE	A (mm)	B (mm)	C (dia mm)	D (dia mm)
TR-220A	36	29.65	64	15.9

TR-300



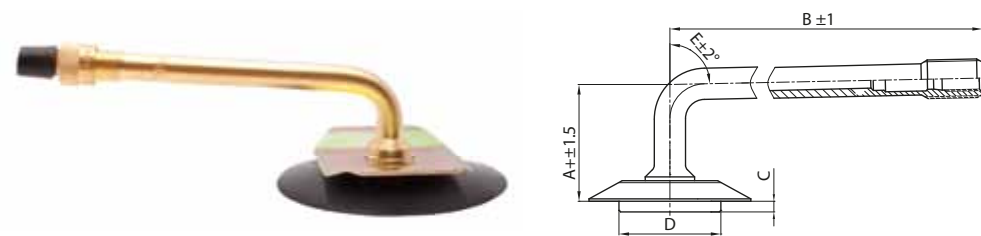
VALVE	A (mm)	B (mm)
TR-300	70	58

TRJ4000-6



VALVE	A (mm)	B (mm)	α°
TRJ4000-6	31	139.7	90

TRJ1175C



VALVE	A (mm)	B (mm)	C (dia mm)	D (dia mm)	E°
TRJ1175C	35	105	4	32	88

TR75A*



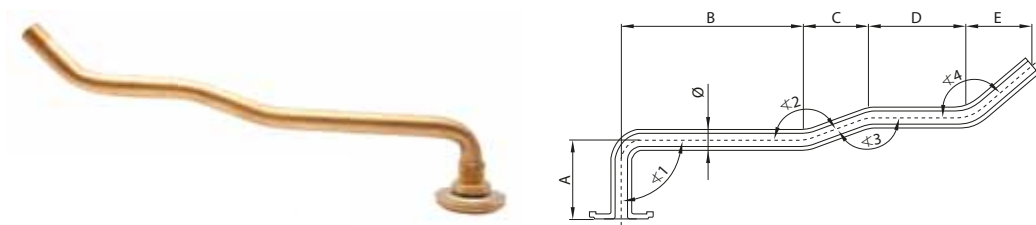
VALVE	A (mm)	B (mm)	C (mm)	D (dia mm)	E°
TR75A	95	76	24	82	86
TR78A	146	127	24	82	86
TR177A	114	95	24	82	86
TR179A	160	141	24	82	86

PK-5A-145



VALVE	A (mm)	B (mm)	C (dia mm)
PK-5A-145	145	6.7	76

V590



VALVE	A (mm)	B (mm)	C (mm)	D (mm)	E (mm)	Ø (mm)	α1	α2	α3	α4
V590	38.5	90	30	50	30	10.2	90°	160°	160°	140°

V3.02...



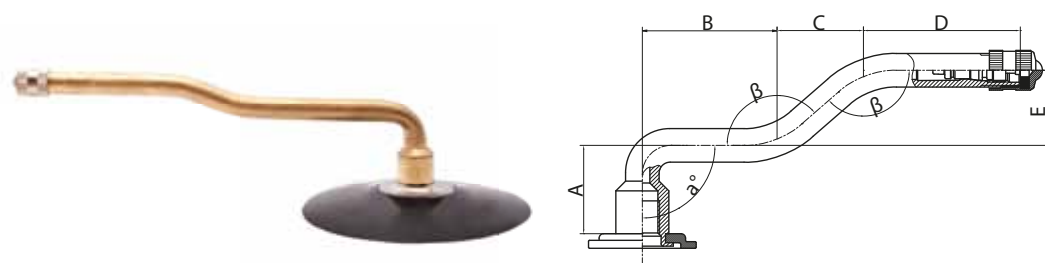
VALVE	A (mm)	B (mm)	α°
V3.02.1	25.5	41.5	120°
V3.02.2	22.5	43	120°
V3.02.3	33	44.5	95°
V3.02.4	39.5	44.5	110°
V3.02.5	20.5	47.5	90°
V3.02.6	23.5	60.5	110°
V3.02.7	22.5	71.5	100°
V3.02.8	20.5	89.5	94°
V3.02.9	20.5	99.5	94°
V3.02.10	20.5	115	94°
V3.02.11	20	126	98°
V3.02.12	20.5	132	94°
V3.02.13	20.5	133.5	90°
V3.02.14	20.5	138.5	94°
V3.02.15	20.5	145.5	94°
V3.02.16	20.5	149.5	90°
V3.02.17	20.5	156.5	90°
V3.02.18	22.5	74.5	90°
V3.02.19	20.5	60	94°
V3.02.20	22.5	56.5	95°
V3.02.21	20.5	172	90°
V3.02.23	29.5	66.5	90°
V3.02.24	20.5	117	90°
V3.02.26	20.5	105	94°
V3.02.27	20	75	94°
V3.02.29	20	127	94°

V3.04...



VALVE	A (mm)	B (mm)	C (mm)	a°	β°
V3.04.1	20.5	32	37	90°	138°
V3.04.2	20.5	38	41.5	90°	153°
V3.04.3	20	59	38.5	94°	163°
V3.04.4	20	74	40	94°	144°
V3.04.5	20	76	47.5	90°	153°
V3.04.6	20	86	47.5	90°	153°
V3.04.7	20.5	30.5	38	90°	154°
V3.04.8	20.5	36.5	43	90°	167°
V3.04.10	20.5	47	53	90°	154°
V3.04.11	20.5	47	63.5	90°	154°
V3.04.12	20.5	60.5	60.5	90°	159°
V3.04.14	20.5	83.5	65	90°	159°
V3.04.15	20.5	42	38.5	90°	120°
V3.04.17	20	65	45	90°	160°
V3.04.18	20	72	45	90°	160°
V3.04.20	20	68	47	94°	164°
V3.04.21	20	83	57	94°	154°
V3.04.22	20	28	47	94°	164°
V3.04.23	20	48	47	94°	164°
V3.04.24	20	58	47	94°	164°
V3.04.25	20	80	47	94°	164°
V3.04.26	20	99	42	99°	189°

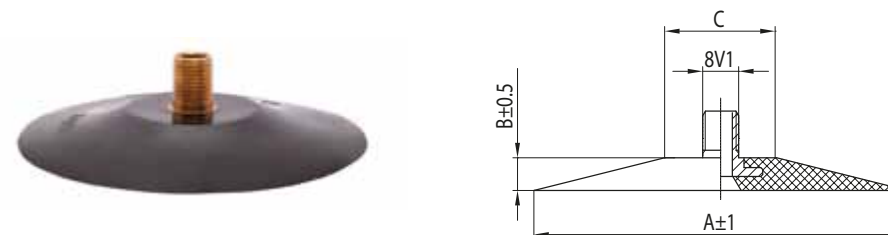
V3.06...



VALVE	A (mm)	B (mm)	C (mm)	D (mm)	E (mm)	a°	β°
V3.06.1	20.5	30.5	19.5	35.5	17	90°	139°
V3.06.2	20.5	44.5	12	37.5	17	90°	125°
V3.06.3	20.5	46	20.5	47.5	17	90°	139°
V3.06.4	32.5	46.5	20.5	46.5	17	95°	140°
V3.06.5	20.5	62.5	19.5	49	17	90°	139°
V3.06.6	20	79.5	19.5	37.5	17	90°	139°
V3.06.7	20.5	45.5	18.5	42.5	17	90°	137°
V3.06.8	24.5	61.5	14.5	50.5	7.5	94°	153°

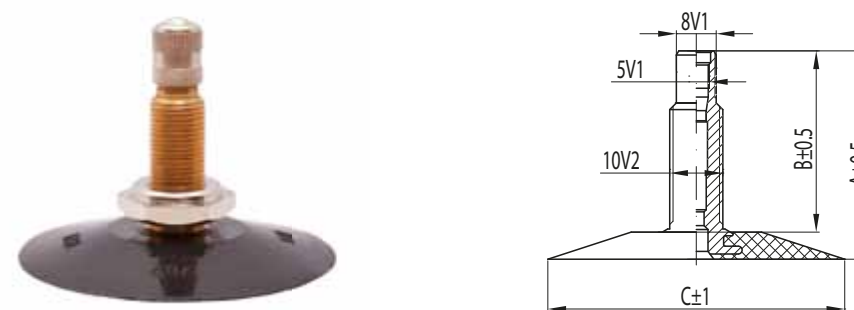
VALVE	A (mm)	B (mm)	C (mm)	D (mm)	E (mm)	a°	β°
V3.06.9	20.5	67.5	19.5	54.5	17	90°	139°
V3.06.12	23.5	71.5	19.5	25.5	11.5	90°	150°
V3.06.13	20	40	13	40	7	94°	153°
V3.06.14	20	50	13	40	7	94°	153°
V3.06.15	20	60	13	40	7	94°	153°
V3.06.16	20	62	13	50	7	94°	153°
V3.06.17	20	75	13	50	7	94°	153°
V3.06.18	20	82	30	35	10	94°	153°

V3.08...



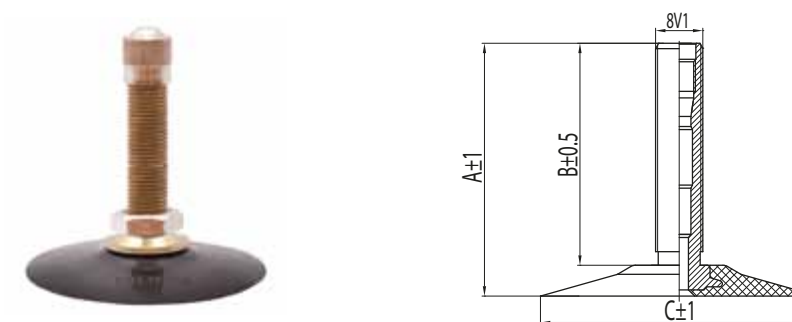
VALVE	A (mm)	B (mm)	C (dia mm)
V3.08.1	65	7	26
V3.08.2	70	7	26
V3.08.3	80	8	26
V3.08.4	57	5	26

SP-5 (TR-11) (V521)



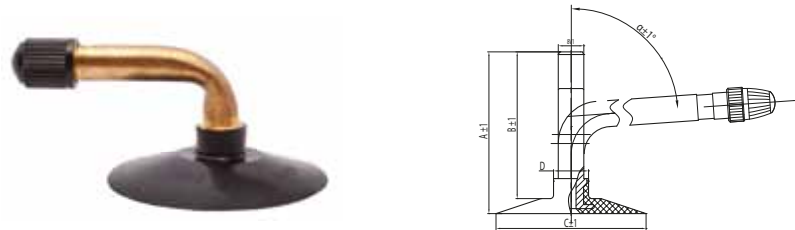
VALVE	A (mm)	B (mm)	C (dia mm)
SP-5	40	34.8	57

GP-4 (TR-4) (V1.09.1)



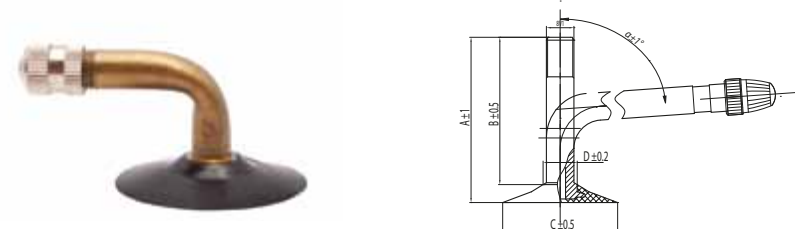
VALVE	A (mm)	B (mm)	C (dia mm)
GP-4	34.5	29.5	45

TR87



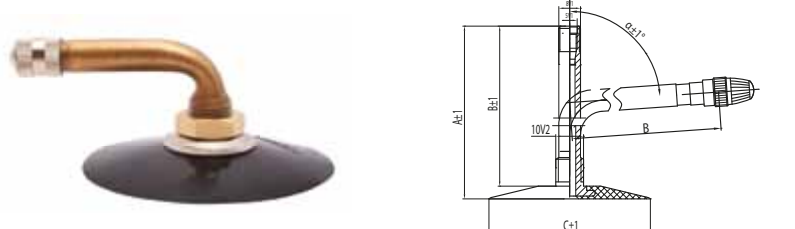
VALVE	A (mm)	B (mm)	C (dia mm)	D (dia mm)	a°
TR87	48	43.5	45	10.5	90

TR87A



VALVE	A (mm)	B (mm)	C (dia mm)	D (dia mm)	a°
TR87A	46	41	32	9.5	90

JS2



VALVE	A (mm)	B (mm)	C (dia mm)	a°
JS2	61	56.5	57	90

GW 4B 50°x60



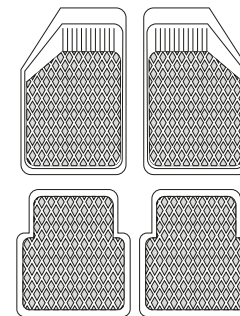
VALVE	L	a°
GW 4B 50°x60	60	50°

If required by the customer, inner tubes can be appointed to any valve offered by our company.

The above shown valve pictures are only examples and real valves can slightly differ from these. However all valves are manufactured according to the above shown technical specification.

CAR RUGS

SLANT SET

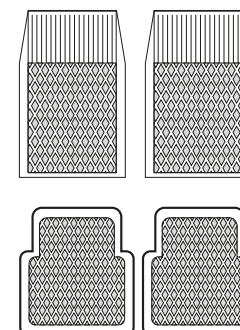


- | | | |
|--|---|---|
| AUDI A3
AUDI A4
BMW 1
BMW 3
BMW 5
CITROEN C2
CITROEN C3
CITROEN C4
CITROEN SAXO
DAEWOO MATIZ
DAEWOO TICO
FIAT CINQUECENTO
FIAT PANDA
FIAT PUNTO
FIAT SEICENTO
FORD FIESTA | FORD FOCUS
NISSAN ALMERA
OPEL CORSA
OPEL MERIVA
OPEL OMEGA
OPEL TIGRA
OPEL VECTRA
OPEL ZAFIRA
PEUGEOT 106
PEUGEOT 206
PEUGEOT 306
PEUGEOT 307
PEUGEOT 308
RENAULT CLIO
RENAULT LAGUNA
RENAULT MASTER | RENAULT MEGANE
ROVER 200
ROVER 45
SEAT ALHAMBRA
SEAT CORDOBA
SEAT IBIZA
SEAT LEON
SEAT TOLEDO
SKODA FABIA
TOYOTA AVENSIS
TOYOTA COROLLA
VOLKSWAGEN BORA
VOLKSWAGEN GOLF
VOLKSWAGEN JETTA
VOLKSWAGEN PASSAT
VOLKSWAGEN POLO |
|--|---|---|

SLANT FRONT

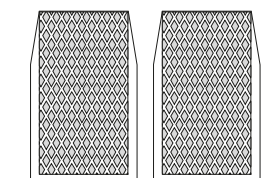
- CITROEN BERLINGO
OPEL ASTRA
RENAULT KANGOO
RENAULT SCENIC
TOYOTA YARIS
-

TONGUE SET



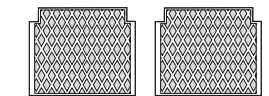
- AUDI A3
AUDI A4
CITROEN SAXO
DAEWOO MATIZ
DAEWOO TICO
FIAT PUNTO
FORD FIESTA
OPEL CORSA
OPEL VECTRA
PEUGEOT 106
PEUGEOT 206
PEUGEOT 406
SEAT TOLEDO
VOLKSWAGEN GOLF
VOLKSWAGEN PASSAT

TONGUE FRONT



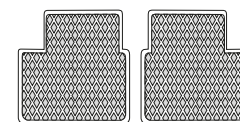
- | | |
|--|--|
| AUDI A6
CITROEN XANTIA
DAEWOO LANOS
DAEWOO NEXIA
DAEWOO NUBIRA
FIAT BRAVA
FIAT BRAVO
FORD MONDEO
HONDA CIVIC | HYUNDAI ACCENT
MAZDA 121
MAZDA 323
NISSAN MICRA
NISSAN PRIMERA
POLONEZ
SKODA OCTAVIA
SUZUKI SWIFT |
|--|--|

TONGUE WIDE REAR



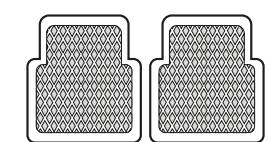
- AUDI 80
AUDI 100
AUDI A6
LADA 2105
LADA 2107
VOLKSWAGEN PASSAT B3

MATIZ REAR



- CITROEN BERLINGO
CITROEN SAXO
DAEWOO ESPERO
DAEWOO MATIZ
DAEWOO NEXIA
FIAT PUNTO
FORD FIESTA
FORD ESCORT
HYUNDAI ACCENT
MAZDA 121
NISSAN MICRA
OPEL ASTRA
OPEL CORSA
OPEL VECTRA
OPEL ZAFIRA
SUZUKI SWIFT
TOYOTA YARIS

TONGUE REAR



- | | |
|---|---|
| BMW 1
BMW 3
BMW 5
CITROEN C2
CITROEN C3
CITROEN C4
FIAT CINQUECENTO
FIAT PANDA
FIAT SEICENTO
FORD FOCUS
NISSAN ALMERA
OPEL MERIVA
OPEL OMEGA
OPEL TIGRA
OPEL ZAFIRA
PEUGEOT 306
PEUGEOT 307 | PEUGEOT 308
RENAULT CLIO
RENAULT LAGUNA
RENAULT MASTER
RENAULT MEGANE
ROVER 200
ROVER 45
SEAT ALHAMBRA
SEAT CORDOBA
SEAT IBIZA
SEAT LEON
SKODA FABIA
TOYOTA AVENSIS
TOYOTA COROLLA
VOLKSWAGEN BORA
VOLKSWAGEN JETTA
VOLKSWAGEN POLO |
|---|---|

MATS

	W1, W2 	W3
785 x 590 x 17 mm 1000 x 1500 x 22,5 mm or cut to the length	500 x 380 mm	585 x 390 x 17 mm

PACKING

310 x 310 x 470 mm 	20' container = 588
1 pallet = 35	26 pallets =



since 1983



Kabat
– Europe's fastest and most
flexible inner tube supplier.
We supply in most other
countries worldwide.

KABAT Spółka Jawna, 64-840 Budzyń, ul. Gumowa 6, POLAND
phone +48 67 283 41 00, fax +48 67 283 41 58
e-mail: export@kabat.pl, export.kabat@gmail.pl
www.kabat.pl